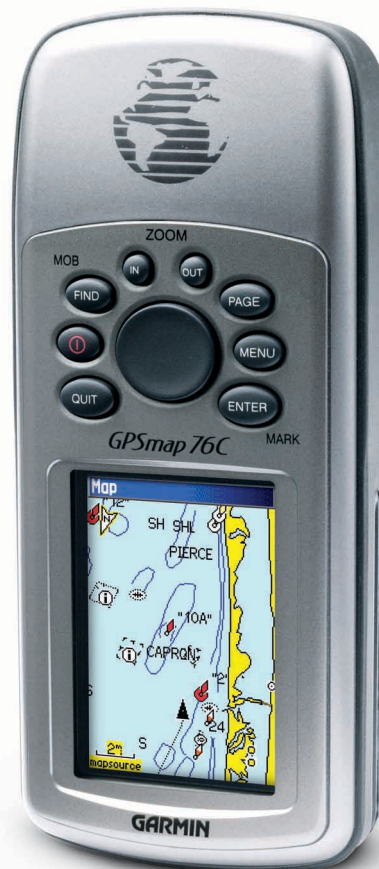


Color so bold, you'll have to see it with your own eyes. The GPSMAP 76C and 76CS feature large 256-color TFT displays that won't wash out in any light. These mariner-friendly handhelds are

## Waterproof receivers with a big splash of color

WAAS-enabled, waterproof, and they'll even float if dropped overboard. They're set to go the distance on land or sea thanks to a long hour battery life and 115-megabyte internal memory for storing loads of extra map detail from MapSource® CDs, including BlueChart® and TOPO. The 76CS adds electronic compass and barometric altimeter capabilities for extremely accurate heading and elevation readings. Automatic pressure trend recording even lets you keep an eye on the weather.





# GPSMAP® 76C/76CS

## specifications



### Navigation features

- Waypoints/icons:** 1000 with name and graphic symbol, 10 proximity
- Routes:** 50 reversible routes with up to 250 points each, plus MOB and TracBack® modes
- Tracks:** Automatic track log; 20 saved tracks let you retrace your path in both directions
- Trip computer:** Current speed, average speed, resettable max. speed, trip timer and trip distance
- Alarms:** Anchor drag, approach and arrival, off-course, proximity waypoint, shallow water and deep water
- Tables:** Built-in celestial tables for best times to fish and hunt, sun and moon rise/set based on date and location
- Map datums:** More than 100 plus user datum
- Position format:** Lat/Lon, UTM/UPS, Maidenhead, MGRS, Loran TDs and other grids, including user grid

### GPS performance

- Receiver:** WAAS-enabled, 12 parallel channel GPS receiver continuously tracks and uses up to 12 satellites to compute and update your position
- Acquisition times:**
  - Warm: Approximately 15 seconds
  - Cold: Approximately 45 seconds
  - AutoLocate™: Approximately 5 minutes
- Update rate:** 1/second, continuous
- GPS accuracy:**
  - Position: < 15 meters, 95% typical\*
  - Velocity: 0.05 meter/sec steady state
- DGPS (USCG) accuracy:**
  - Position: 3-5 meters, 95% typical
  - Velocity: 0.05 meter/sec steady state
- DGPS (WAAS) accuracy:**
  - Position: < 3 meters, 95% typical
  - Velocity: 0.05 meter/sec steady state
- Dynamics:** 6 g's
- Interfaces:** USB, RS232 with NMEA 0183, RTCM 104 DGPS data format and proprietary Garmin
- Antenna:** Built-in quadrifilar, with external antenna connection (MCX)
- Differential:** DGPS, USCG and WAAS capable

### Moving map features

- Basemap:** (GPSMAP 76C & 76CS) Built-in routable basemap (North and South America) with cities, highways, interstates, local thoroughfares and secondary roads within metro areas, interstate exit services, airports, rivers, lakes, coastlines and tide stations

- Uploadable maps:** (GPSMAP 76C & 76CS) Accepts up to 115 megabytes of downloaded map detail from a variety of optional MapSource® CDs

- Electronic compass feature** (GPSMAP 76CS only)
- Accuracy:** ±2 degrees with proper calibration (typical); ±5 degrees extreme northern and southern latitudes

- Resolution:** 1 degree

- Barometric altimeter feature** (GPSMAP 76CS only)
- Accuracy:** 10 feet with proper calibration (user and/or automatic calibration)

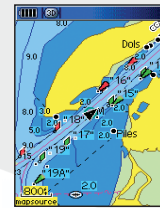
- Resolution:** 1 foot
- Range:** -2,000 to 30,000 feet
- Elevation computer:** Current elevation, resettable minimum and maximum elevation, ascent/descent rate, total ascent/descent, average and maximum ascent/descent rate
- Pressure:** Local pressure (mbar/inches HG), 48-hour automatic pressure trend recording

- Power Source:** Two "AA" batteries (not included)
- Battery life:** Up to 30 hours (76C)  
Up to 20 hours (76CS)

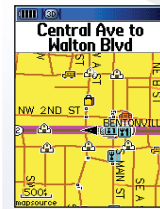
- Physical Size:** 2.7"W x 6.2"H x 1.4"D (6.9 x 15.7 x 3.5 cm)
- Weight:** 7.6 ounces with batteries
- Display:** 1.5"W x 2.2"H (3.8 x 5.6 cm)  
256-color transfective TFT display (160 x 240 pixels)
- Case:** Fully gasketed, high impact plastic alloy, waterproof to IEC 60529 IPX7 standards
- Temp. range:** 5°F to 158°F (-15°C to 70°C)
- User data storage:** Indefinite, no memory battery required

- Accessories Standard:**
  - PC/USB interface cable
  - MapSource Trip & Waypoint Manager
  - Owner's manual
  - Quick reference guide
  - Wrist strap

- Optional:**
  - Marine mount
  - Carrying case
  - 12-volt adapter cable
  - Power/data cable
  - Remote GPS antenna
  - MapSource CD-ROMs
  - Automotive navigational kit
  - Includes (City Select®, with full unlock, friction mount, dash mount, and 12-volt power cable)



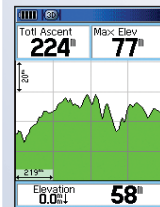
Accepts MapSource BlueChart® data for detailed offshore cartography.



Get detailed street maps plus the location of services with MapSource City Select data.



MapSource TOPO data is ideal for outdoor sports such as geocaching.



The barometric altimeter feature on the GPSMAP 76CS provides elevation profiles.

©2004 Garmin Ltd. or its subsidiaries



Garmin International Inc.  
1200 East 151st Street  
Olathe, Kansas 66062, U.S.A.  
913/397.8200 fax 913/397.8282

Garmin (Europe) Ltd.  
Unit 5, The Quadrangle  
Abbey Park Industrial Estate  
Romsey, SO51 9DL, U.K.  
44/1794.519944 fax 44/1794.519222

Garmin Corporation  
No. 68, Jangshu 2nd Rd.  
Shijr, Taipei County, Taiwan  
886/2.2642.9199 fax 886/2.2642.9099

www.garmin.com

Specifications are preliminary and subject to change without notice.

\* Subject to accuracy degradation to 100m 2DRMS under the U.S. Department of Defense imposed Selective Availability Program.

GPSMAP 76C

GPSMAP 76CS

